



Sustainable energy **P**ositive & zero **cAR**bon **C**ommunities**S**

SPARCS: Co-creation model for sustainable and smart urban areas

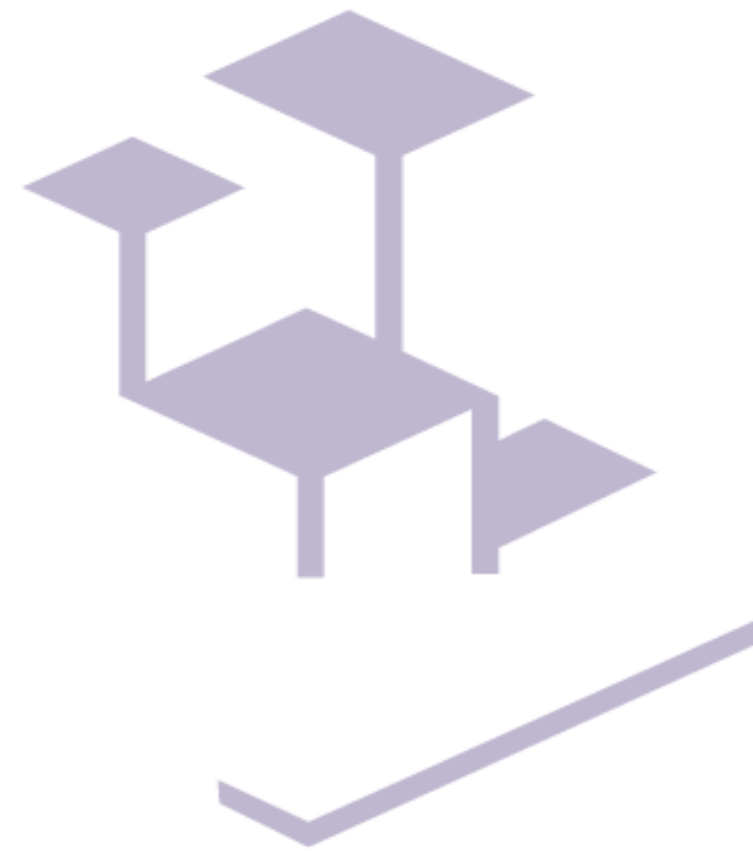
SPARCS webinar: The Best Practicalities of Engaging Different Actors 20.4.2023

Jani Tartia, Project Manager
City of Espoo, Centre of excellence for sustainable development, SPARCS project



Horizon 2020
European Union funding
for Research & Innovation

This project has received funding from the European Union's Horizon 2020 research and innovation programme under Grant Agreement No. 864242
Topic: LC-SC3-SCC-1-2018-2019-2020: Smart Cities and Communities



The Espoo Story

The Sustainable Espoo Programme

Goals

- 

1. Espoo will be a pioneer in implementing the UN Sustainable Development Goals
- 

2. Espoo will achieve carbon neutrality by 2030
- 

3. The Espoo community and residents will act sustainably
- 

4. Espoo will be a model city of sustainable urban development
- 

5. Espoo is the best development partner for sustainable and smart urban solutions

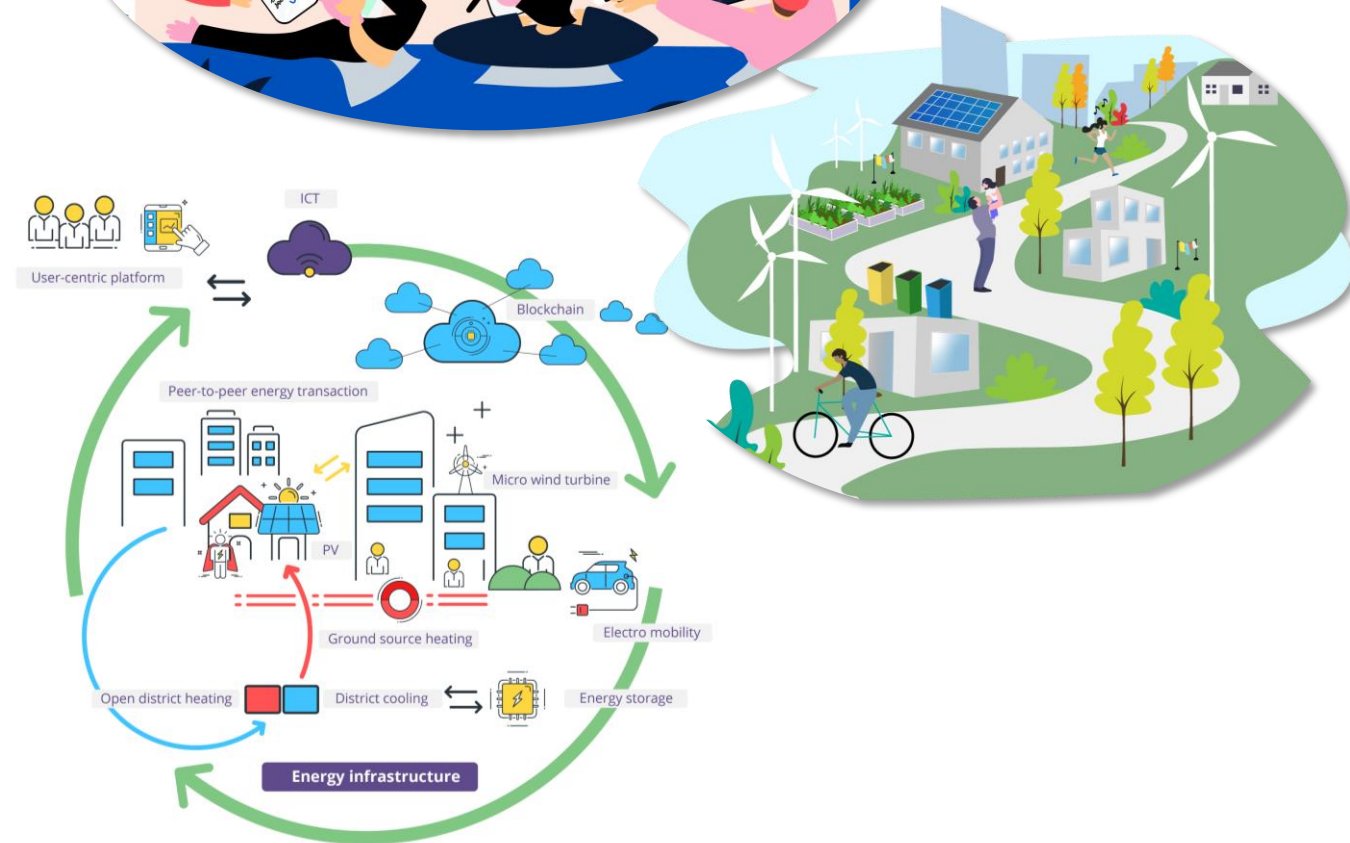
Development entities

- Mobility and transport
- Energy systems
- Circular economy and sustainable living
- Sustainable land use and construction
- Nearby nature and biodiversity



'Research questions'

1. How to **co-develop urban areas and urban solutions together with different stakeholders**, including the city organization, companies, universities and research institutions, organizations, landowners and citizens?
 2. How to **define goals and aims for sustainability and integration of smart solutions together** with different stakeholders for shared benefits and optimization **locally**?
- Urban area (district, block, space) as a **system** comprised of multiple interlinking elements



Kera area as an innovator in co-creation

- ▶ Kera is currently a brownfield area (old logistics area) which will be turned into a new urban district with 14.000 residents and 10.000 jobs
- ▶ The new Kera will be built sustainably according to the principles of the circular economy, favouring carbon-neutral solutions
- ▶ Kera's transformation from an old industrial area to a new city district enables experimentation with sustainable solutions and a new kind of cooperation, where the city is built together from the beginning. Kera is an opportunity for cooperation, learning and growth at the forefront of future urban development
 - ▶ Kera Development Commitment
- ▶ Kera is a focal point of city activities and development projects
- ▶ Temporary uses of the logistics halls for local businesses, art and culture



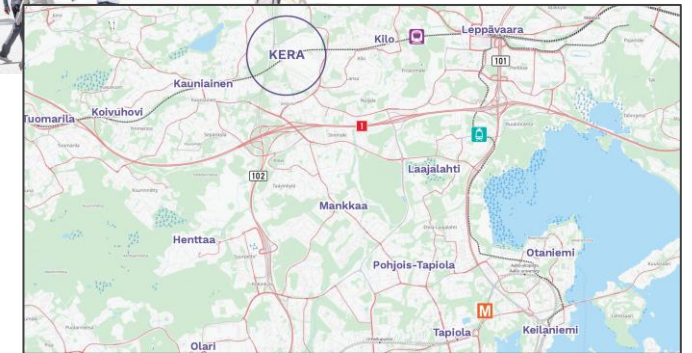
2015



2020



2030+



Where can co-creation have a positive impact on urban planning?

Sustainability,
attractiveness,
digitalisation

1. To create not only ecologically sustainable and smart urban areas, but also community-based, stimulating and surprising urban areas.

User orientation,
flexibility, resilience

2. To develop urban structures or services that are user-oriented, flexible over the regional lifecycle and more resilient to different shocks in the operational environment.

Economy

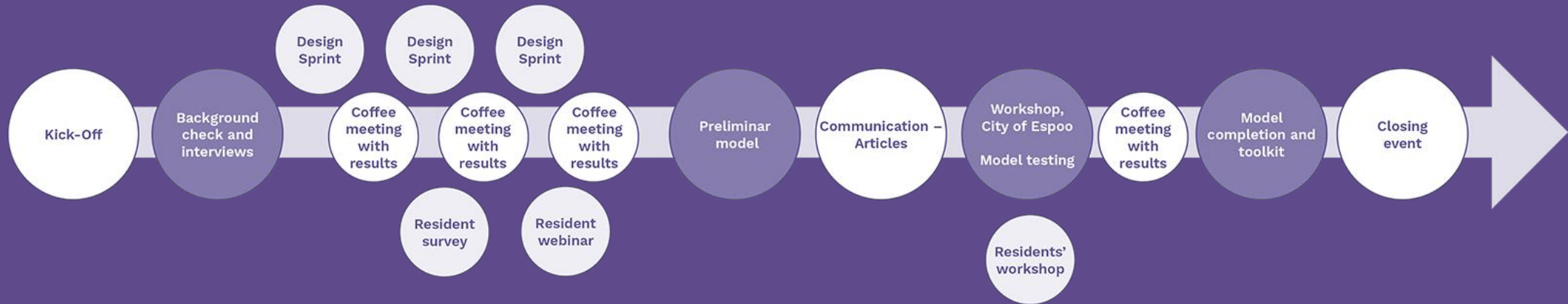
3. To optimise the resources and economic roles of public and private actors in the regional lifecycle. To improve the productivity of project implementation.

Innovation

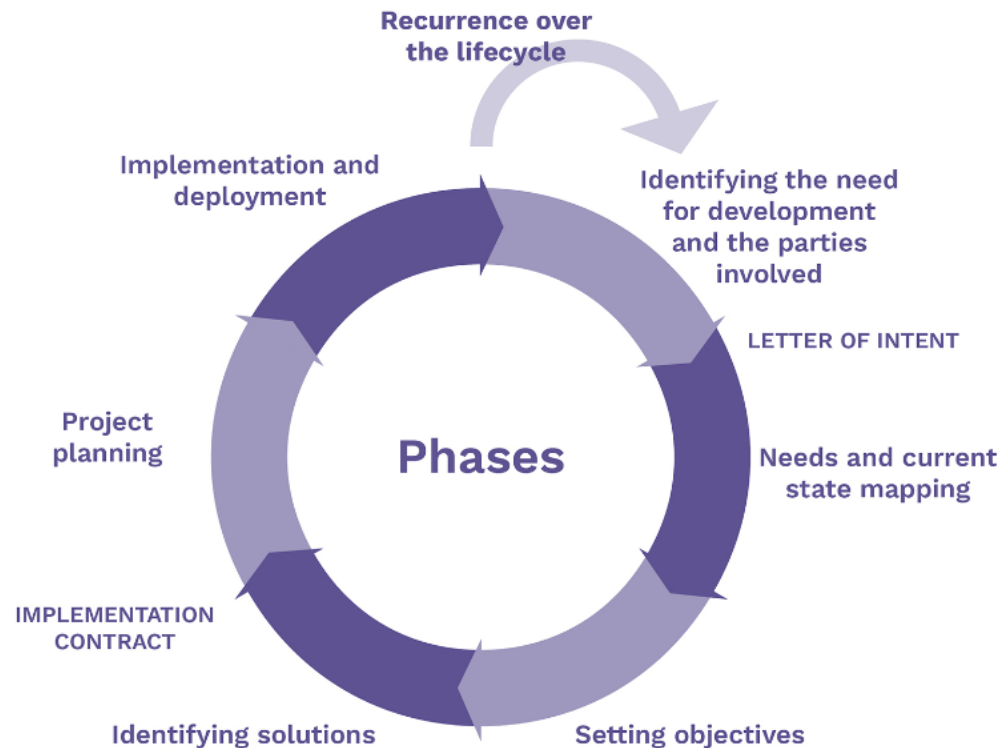
4. To increase the innovation capacity of the urban community and test new services and solutions.

Co-creation as a method

- Procurement process to find consultant partners to support the model creation: WSP Finland and Korkia Consulting won the tendering process
- The co-creation model has itself been created through a co-creation process and methods (including best practices from 'alliance' type of working processes) together with diverse stakeholders in Dec 2021 – Dec 2022
 - Benchmarking and interviews
 - Design Sprints (workshops) and interactive 'Coffee Meeting with Results' webinars
 - Citizens: online questionnaire, webinar, workshop
- The toolbox has been developed as an open website during the development which has also acted as a resource bank. The final model/toolbox is also on the same website
- Stakeholders: companies, organizations, city departments, landowners (Kera area), other cities, universities and research institutions, citizens
- Number of participants:
 - Organizational: ~150 individual participants representing +40 different organizations
 - Citizens: ~130 responses to online questionnaire, ~20 participants in live workshop



Co-creation model



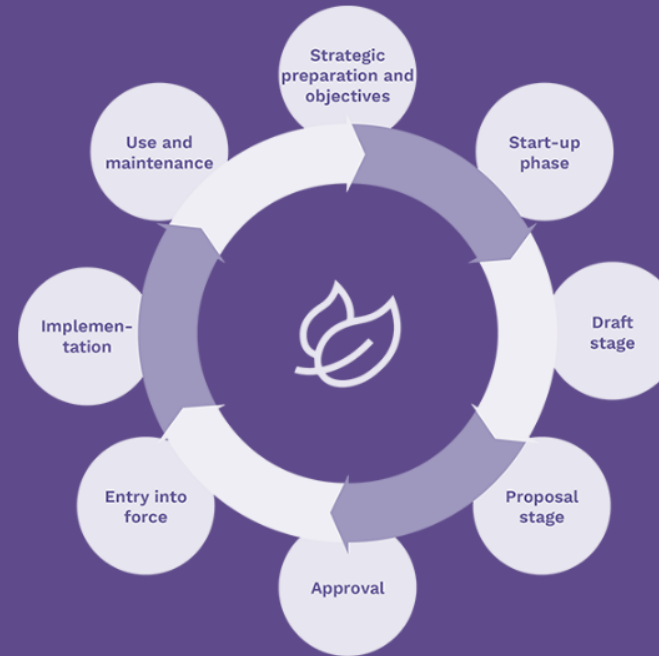
Co-creation model as a diagram

- Co-creation is **equal and network-like** mode of working together with diverse stakeholders to achieve common goals. It enables the processing of complex issues, such as the **achievement of sustainability goals**, and the **development and implementation of new solutions**.
- The reliability of the process and the commitment to it require the preparation of binding **agreements** in its various stages when aiming for implementation.
- A co-developing process can essentially speed up implementation and still be **democratic and open**
- Key to success and securing the community's continuous development is the ability to move forward **without being anchored to reaching a certain final situation**
- **Achieving** a common understanding of the goals and ensuring the feasibility of new ideas is also key.

Topics

- ▶ How to co-develop and co-create new innovative urban solutions in a given area?
- ▶ Focus on:
 - ▶ Urban Energy
 - ▶ Urban Mobility
 - ▶ Urban Green&Blue Infrastructure (example on the right)

1. **Identification of the actors** involved in the design, construction and maintenance of blue-green infrastructure in the region as an initial market dialogue and internal work within the city.
2. **Defining the roles and cost responsibilities** of private and public actors in the implementation of blue-green infrastructure in the region. Implementation and maintenance models.
3. Expert survey and description of the **state of nature, values, flows and potential for ecosystem services**, and identification of **special sites and places of interest** in the local natural environment through surveys.
4. Defining, together with the market dialogue consortium, **the target level of solutions** for green and blue-green infrastructure and their **readiness and maintenance** in light of the municipal and national strategic objectives. Translating objectives into a clear **vision** and **identifying needs in the form of a plan**.
5. **Communicating** the vision for blue-green infrastructure and organising a **comment and development round** on the project website. Opening up a permanent dialogue with all stakeholders.
6. **Revision of the target level** of blue-green infrastructure based on feedback and in relation to other needs of the plan. **Agreeing** and describing **the main principles of the content**. Review of the solutions.



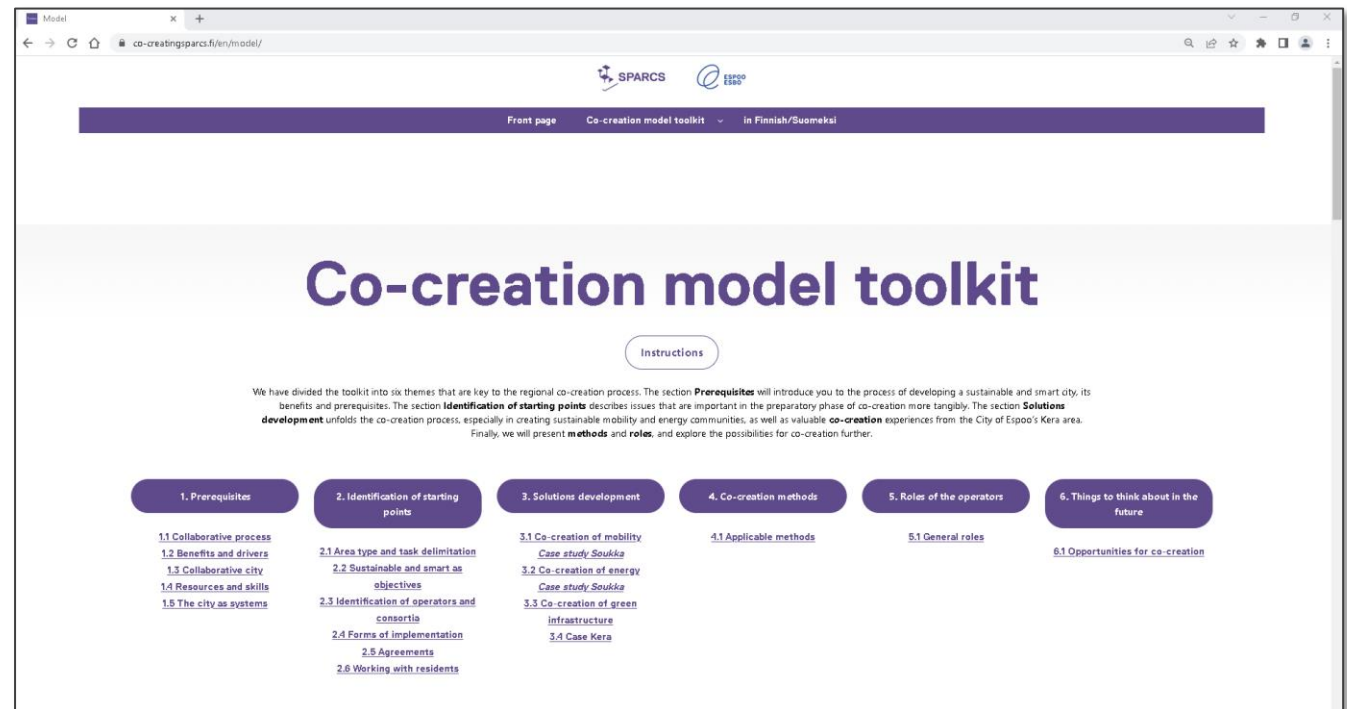
7. **Establishing a commitment and performance indicators** for the implementation of blue-green infrastructure. Feedback possibility for market operators and others interested in the development of the area.
8. **Refining, innovating and specifying solutions** for individual **sites** (plot, park, street) through planning, competitions, etc. Description of the level of maintenance and actors involved and verification of the effectiveness of solutions in relation to indicators (net biodiversity gain, CO₂, cooling, sustainable stormwater management, functional diversity, food/crop, etc.) + interaction.
9. Reflecting on and evaluating **the contractor's development ideas**. Creating a **maintenance target and contract documents**.
10. **Specification of the level and means of maintenance through a negotiated procedure** with the selected maintenance contractor for the area/site and commitment to the substantive objectives.
11. **Residents' functional and maintenance start-up** with workshops involving the maintenance contractor or maintenance company.
12. **Development of sites and measurement of the implementation of regional targets** through annual reviews by landowners and the city. Possible corrective measures.

Co-creation model for sustainable and smart urban areas

www.co-creatingsparcs.fi/en



- ▶ **Open**, free to use and accessible online toolbox for different stakeholders
- ▶ A **‘toolbox’**: source of inspiration and practical tools and methods, not a rigid model or pre-defined format
- ▶ Case context is **everything** – no two cases are exactly alike
- ▶ **Dynamic** toolbox – developing, ‘a process’
 - ▶ Geographical areas - cases
 - ▶ Thematic areas (e.g. 3d-model as a tool in the co-creation process)



<https://www.sparcs.info/>

  @SPARCSeu



Stadt Leipzig



CÂMARA MUNICIPAL DA MAIA



KLADNO



ΔΗΜΟΣ ΚΗΦΙΣΙΑΣ



SIEMENS



CITYCON



ADVEN

Fraunhofer



Wohnen & Service Leipzig GmbH

Leipziger
Stadtwerke

CENERO

seecon
Ingenieure



UNIVERSITÄT
LEIPZIG



Sociedade Portuguesa de Inovação



中国三铁

OR
Reykjavik
Energy



CTU

CZECH TECHNICAL
UNIVERSITY
IN PRAGUE

Suite5
We Deliver Intelligence



БВБАВТОДОР

CiviESCO



GOPA.com.

MEMBER OF GOPA CONSULTING GROUP